

BioHumate

Plant biostimulant and
microbial activator

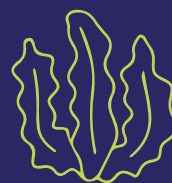
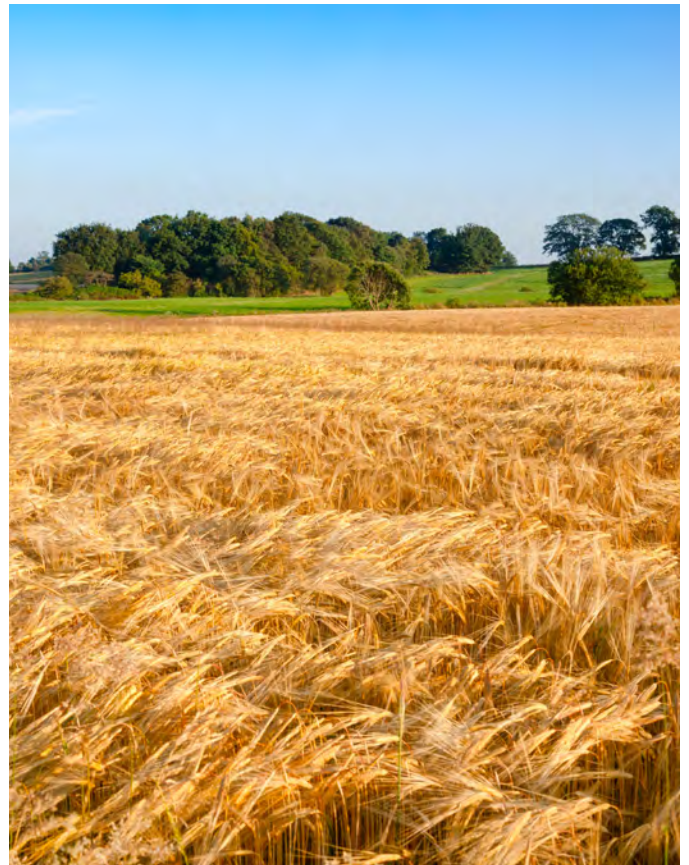
BioHumate is a liquid blend of biologically active natural sourced ingredients, which exert a positive influence on the whole growth cycle of arable and horticultural crops. BioHumate improves soil conditions and in particular, promotes the activity of beneficial bacteria and fungi including mycorrhizae. This increased bioactivity leads to an improved soil structure and encourages the symbiotic relationship between plants and their associated microbial species, and the natural organic carbon cycle is reinstated after being disturbed by soil cultivation.

Why choose BioHumate?

BioHumate application can offer the following benefits to the crop:

- Increased cation exchange capacity for increased Nitrogen Use Efficiency
- Increased nutrient absorption for reduced required for fertiliser
- Reduction in nutrient leaching for reduced pollution of water ways
- Increased stress tolerance and plant vigour for increased crop yields

Organic matter in the soil not only affects soil structure and the micro fauna but also influences the cation exchange capacity and thus the availability of nutrients. Plants are able to make strong roots through improved root growth and availability.





Why choose BioHumate?

The stimulatory effect is also evident in the plant from the earliest stages of plant growth. Seeds dressed with BioHumate show improved germination rates, root growth is stimulated, and more robust top growth is produced when soil is treated with BioHumate or when sprayed after emergence. A healthy plant with a strong root system not only makes more use of available nutrients but also exhibits better disease resistance.

Root and stem development are important factors not only in the establishment of a robust plant but also in enabling the plant to both avoid and resist fungal diseases. Many plants have root exudates that deter fungal attack, and rapid root growth provides a tougher root that is resistant to penetration by soil fungi such as Pythium. Rapid stem growth moves vulnerable leaves away from the soil surface and from potential contamination by Rust, Septoria etc.

The efficiency of applied chemicals (pesticides and fertilizers) are also improved when BioHumate is used as uptake is increased. As a result, BioHumate application allows for reductions in such as fertilizer and fungicides, whilst maintaining yield and quality. Crop yields are improved on soils low in organic matter or fertility.

Application protocols

For best results apply 3L/ha before sowing. A further 3L/ha should be applied alongside fertilizer treatment at the post-emergence stage and a further 3L/ha one month later.

For soils with very low organic matter levels (1.5% or less) use 8L/ha on the first application.

For more information on any of our products, contact our BioAgronomy experts.



Contact us

+44 (0)1234 989 000

info@biotechnica.co.uk

Hudson Road, Elm Farm Industrial Estate,
Bedford, MK41 0HR, United Kingdom

